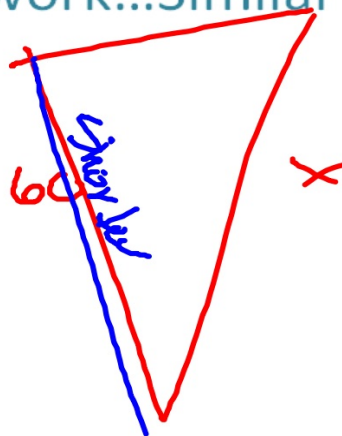
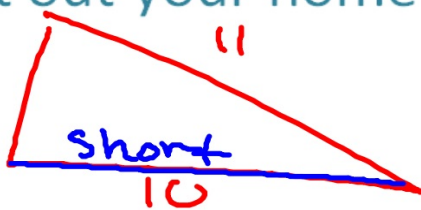


January 26, 2012

Get out your homework...Similar Figures

10)

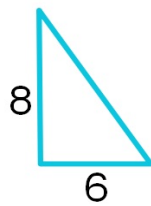
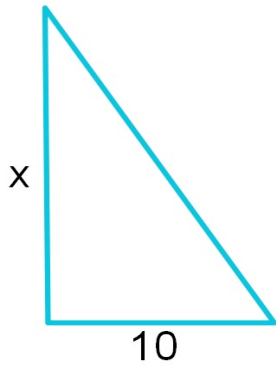


$$\frac{10 \cdot 6}{11 \cdot 6} = \frac{60}{x}$$

$$66 = x$$

1/26 - Shadow Problems using Proportion

Review:



$$\frac{x}{10} = \frac{8}{6}$$

$$\frac{6x}{6} = \frac{80}{6}$$

$$x = 13\frac{2}{3}$$

$$13\frac{1}{3}$$

$$\begin{array}{r} 6 \overline{) 80} \\ \underline{60} \\ 20 \\ \underline{18} \\ 20 \\ \underline{18} \\ 20 \end{array}$$



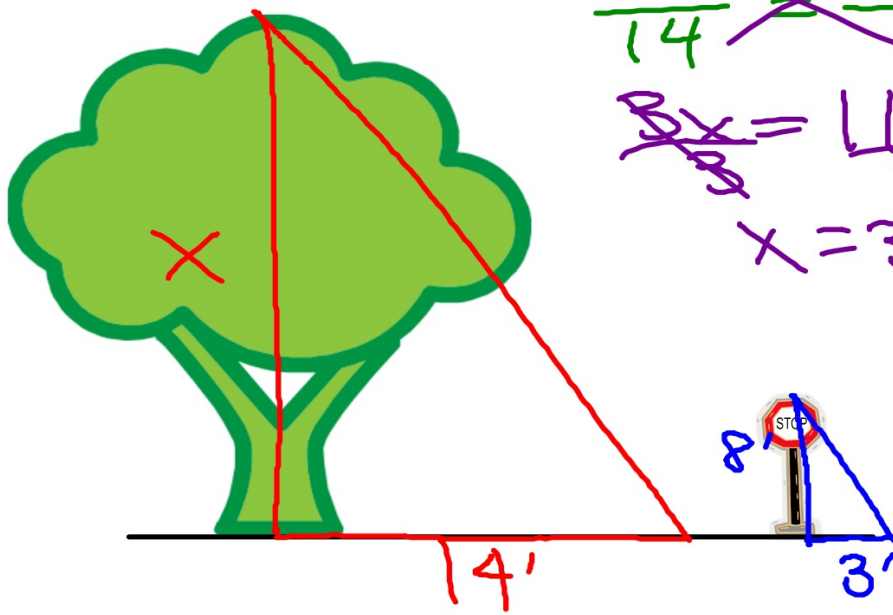
$$\begin{array}{r} 3 \overline{) 112} \\ \underline{9} \\ 22 \\ \underline{21} \\ 10 \end{array}$$

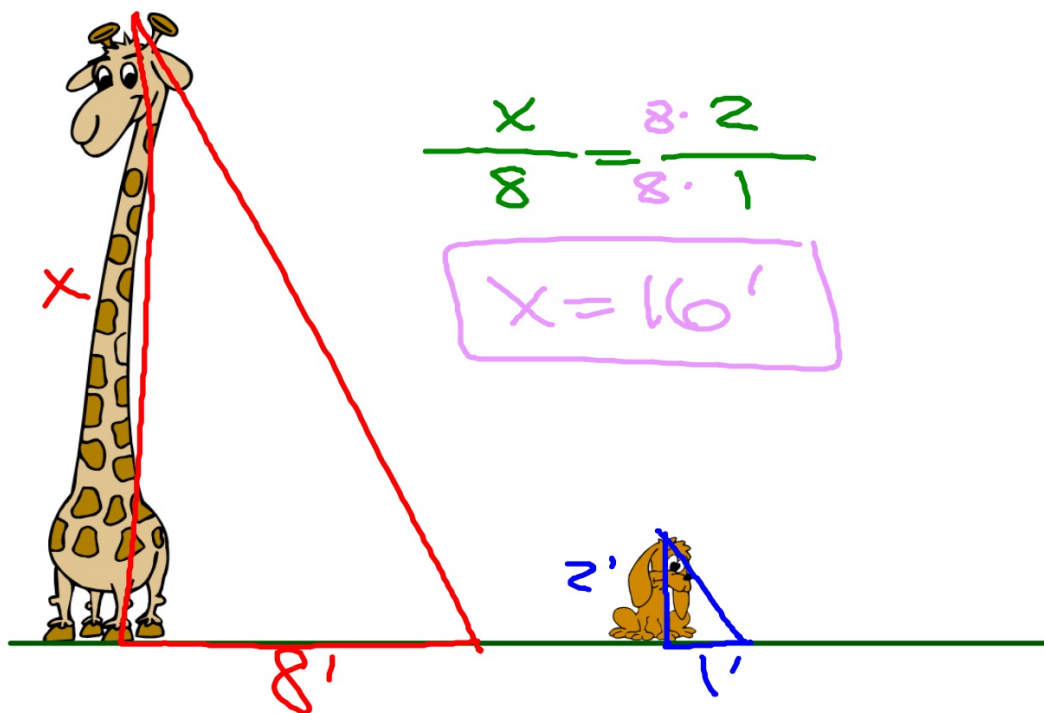
$$\begin{array}{r} 3 \overline{) 112} \\ \underline{-9} \\ 22 \\ \underline{-21} \\ 10 \end{array}$$

$$\frac{x}{14} = \frac{8}{3}$$

$$3x = 112$$

$$x = 37 \frac{1}{3}$$





If a 12 ft tall statue casts a 16 ft long shadow then how long is the shadow that a 9 ft tall adult elephant casts?

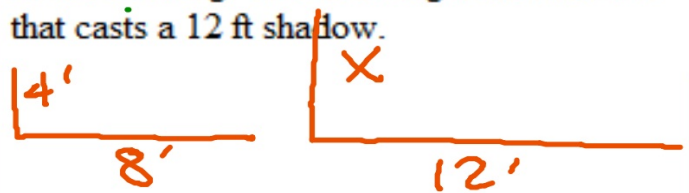


$$\frac{16}{12} = \frac{x}{9}$$

$$12x = 144$$

$$x = 12'$$

A bird bath that is 4 ft tall casts a shadow that is 8 ft long. Find the height of a woman that casts a 12 ft shadow.



$$\frac{4}{8} = \frac{x}{12}$$

$$x = 6'$$

Homework

White worksheet 3

Due: Monday