

January 3, 2012

Monday Tuesday Wednesday Thursday Friday

2 WS	3 WS	4 WS	5 WS	6 WS
9 Rev	10 Rev	11 Test	12 M.U.	13 N/A Drop Dead
16 X	17	18 minimal day	19	20 X

1/3 - Writing Equations of Lines from Graphs

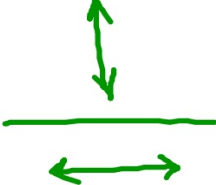
$$y = mx + b$$

"Slope-intercept formula"

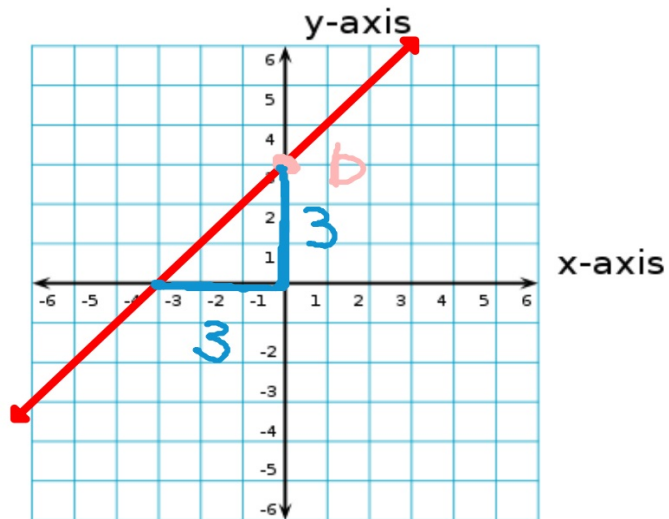
\uparrow slope \uparrow y-intercept

$\underbrace{\hspace{1.5cm}}$

$\frac{\text{rise}}{\text{run}}$



Write the equation of the given lines, in slope-intercept form.



1. Find the y-intercept.

$$b = 3$$

2. Find the slope.

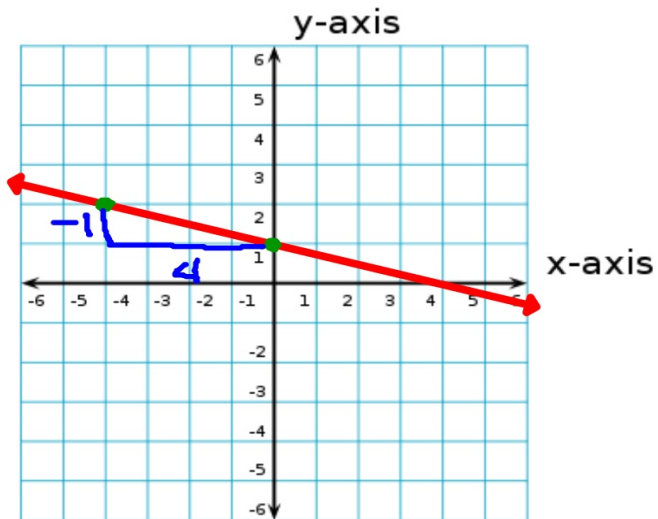
$$m = \frac{3}{3} = 1$$

3. Write the equation.

$$y = mx + b$$

$$y = 1x + 3$$

$$y = x + 3$$



1. Find the y-intercept.

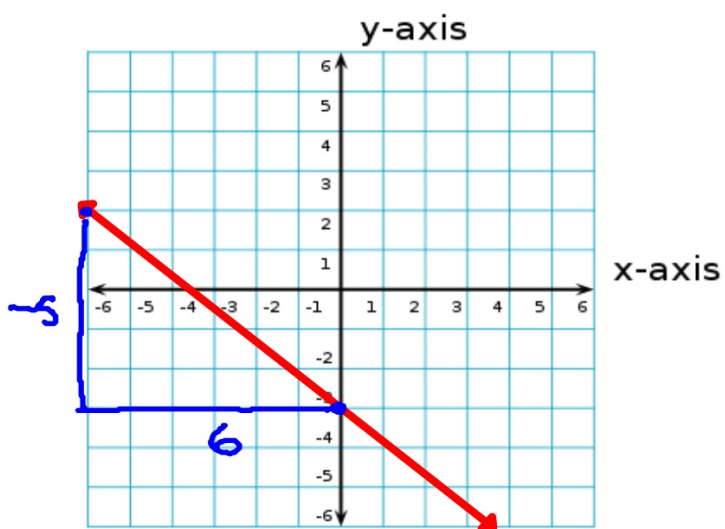
$$b = 1$$

2. Find the slope.

$$m = -\frac{1}{4}$$

3. Write the equation.

$$y = -\frac{1}{4}x + 1$$



1. Find the y-intercept.

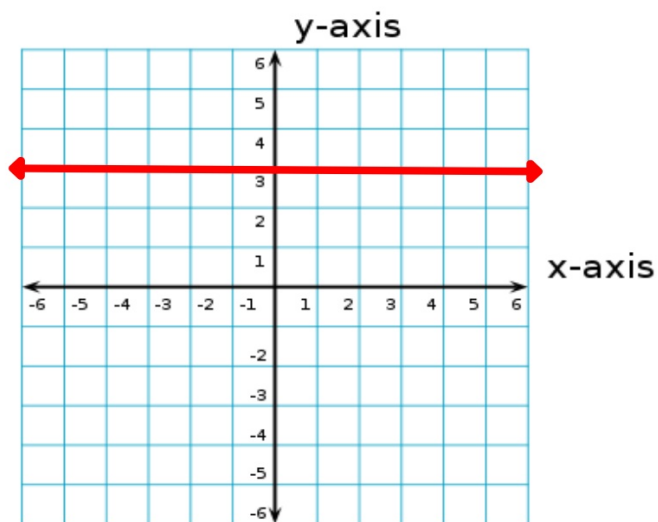
$$b = -3$$

2. Find the slope.

$$m = \frac{-5}{6}$$

3. Write the equation.

$$y = \frac{-5}{6}x - 3$$



1. Find the y-intercept.

$$b = 3$$

2. Find the slope.

$$m = 0$$

3. Write the equation.

$$y = 0x + 3$$

$$y = 0 + 3$$

$$\boxed{y = 3}$$

HOMELWORK

Green Worksheet Graphing
WS5

Due Wednesday