

DECEMBER 2, 2011

~~GET OUT YOUR HOMEWORK:~~

LIME WORKSHEET

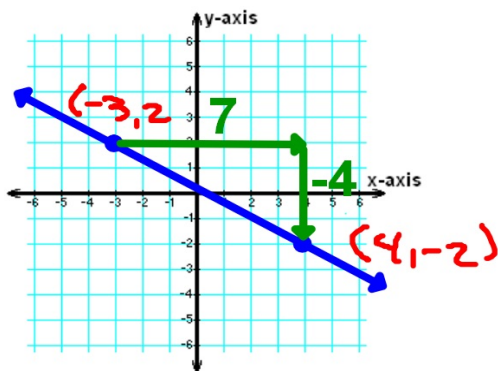
due on Monday

*Project is due
on Friday the 9th*

12/2 - Finding Slopes from Points

yesterday:

$(-3, 2)$ and $(4, -2)$



$$m = \frac{-4}{7}$$

$$\begin{aligned} & \frac{-2 - 2}{4 - (-3)} \\ & = \frac{-4}{7} \end{aligned}$$

Slope formula:

$$m = \frac{y_2 - y_1}{x_2 - x_1}$$

$x_1 = x$ from the 1st point

$x_2 = x$ from the 2nd point

$y_1 = y$ from the 1st point

$y_2 = y$ from the 2nd point

Find the slope of the line that goes through these 2 points:

$(2, 5)$ $(6, 3)$

$$\begin{aligned} m &= \frac{3 - 5}{6 - 2} \\ &= \frac{-2}{4} \\ &= -\frac{1}{2} \end{aligned}$$

$(4, -1)$ $(-7, 0)$

$$\begin{aligned} m &= \frac{0 - (-1)}{-7 - 4} \\ &= \frac{1}{-11} \end{aligned}$$

$$m = \frac{y_2 - y_1}{x_2 - x_1}$$

$$(5, -9) (-7, 3)$$

$$\begin{aligned} m &= \frac{3 - (-9)}{-7 - 5} \\ &= \frac{12}{-12} \\ &= -1 \end{aligned}$$

$$(-8, -10) (6, -4)$$

$$\begin{aligned} m &= \frac{-4 - (-10)}{6 - (-8)} \\ &= \frac{6}{14} \\ &= \frac{3}{7} \end{aligned}$$

$$(-6, 5) (-7, 8)$$

$$\begin{aligned} m &= \frac{8 - 5}{-7 - (-6)} \\ &= \frac{3}{-1} \\ &= -3 \end{aligned}$$

HOMEWORK:

Yellow **WORKSHEET** 2

due *Tuesday*